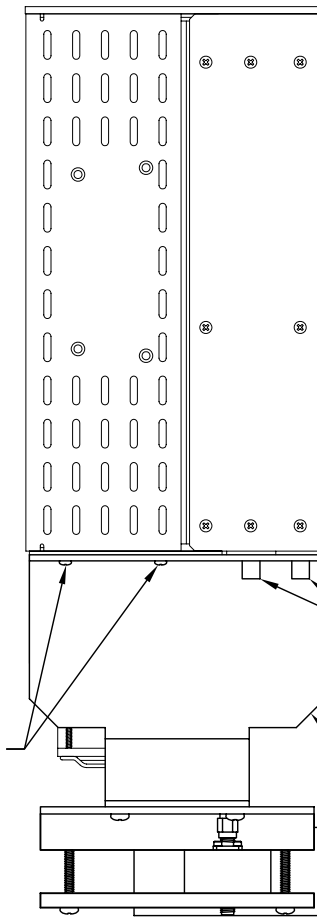
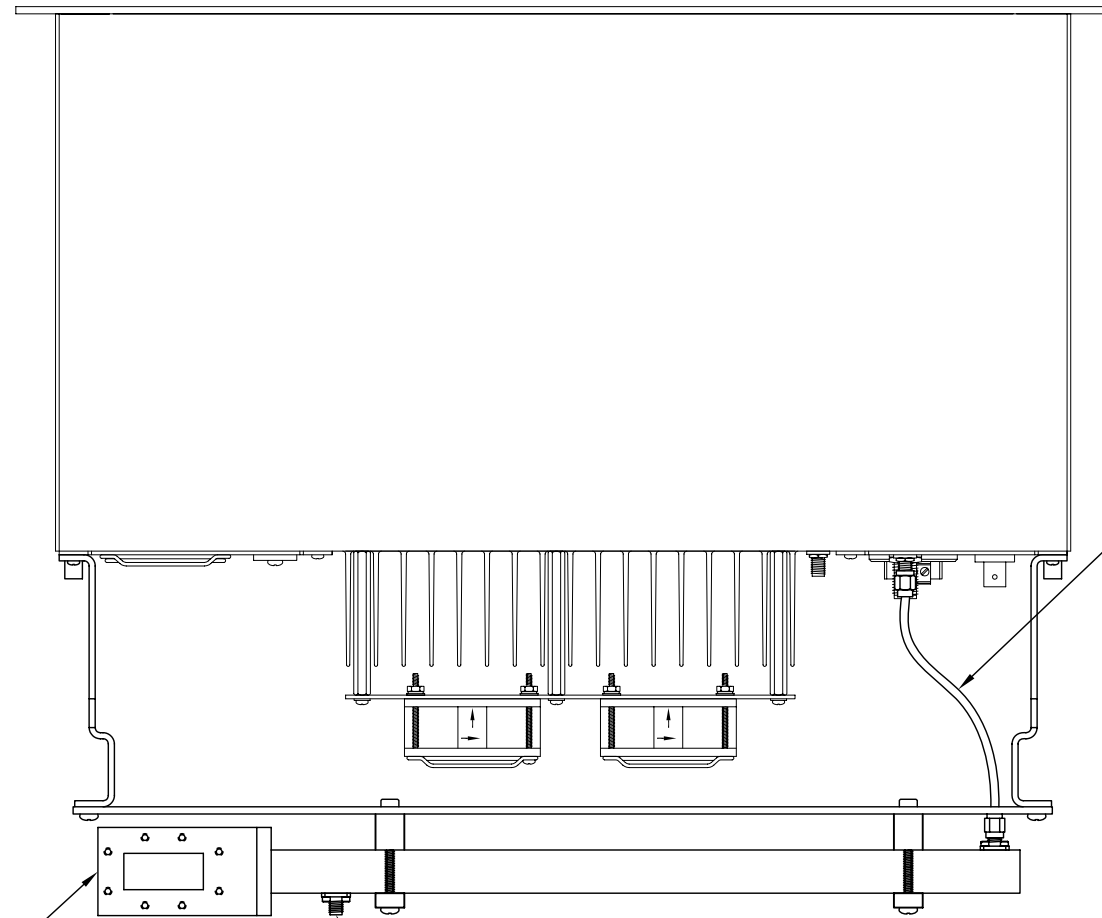
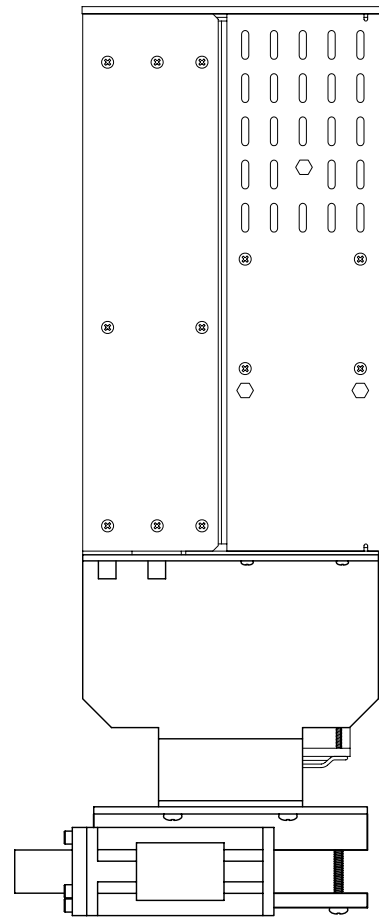


REVISIONS		
LTR	DESCRIPTION	APPROVED
A	NEW OPT KIT CREATE, ECO6965	RT



SEE SHEET 2

RF SAMPLE PORT (REF ONLY)

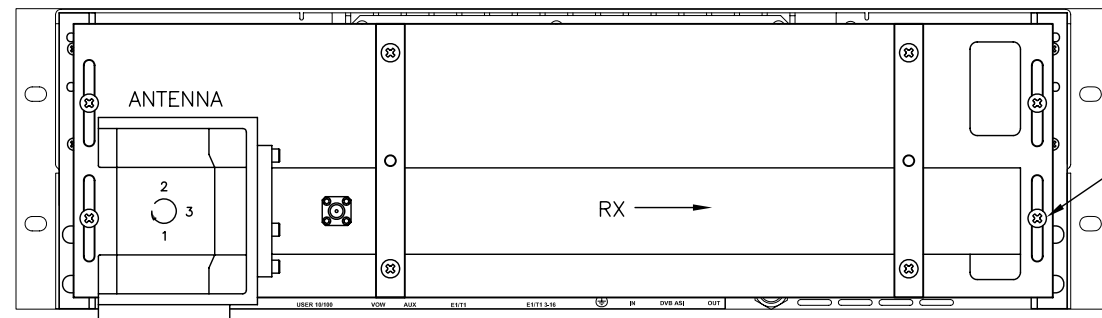
5 CABLE 6" COAX SMA-M TO SMA-M

REUSE EXISTING SCREWS 2 PLCS (EACH SIDE)

DTVA ASSEMBLY (REF)

REUSE EXISTING THUMB SCREWS 2 PLCS (EACH SIDE)

1 2 PLCS BRACKET P/N 206-15229-01



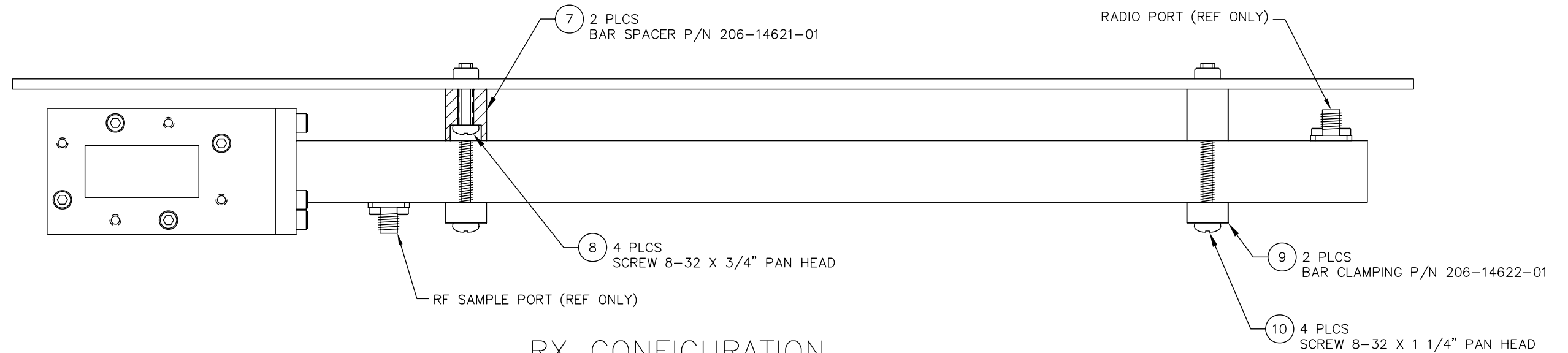
3 4 PLCS SCREW 8-32 X 3/8" PAN HEAD

RX CONFIGURATION SHOWN

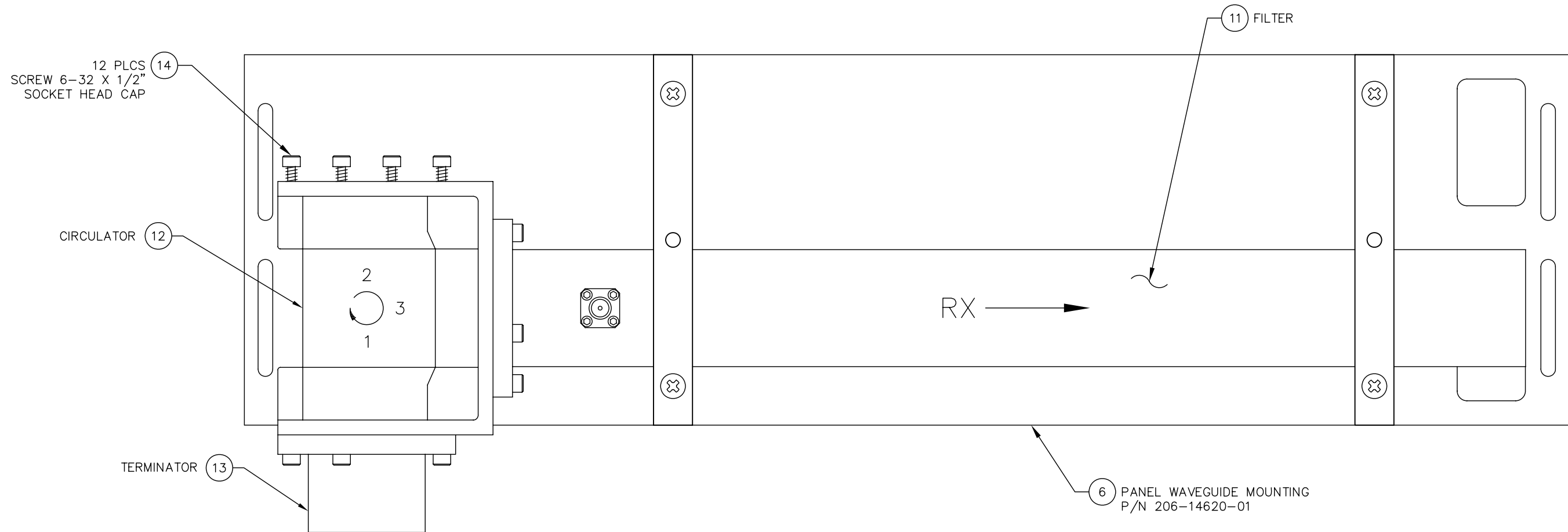
TERMINATION

NOTES: UNLESS OTHERWISE SPECIFIED

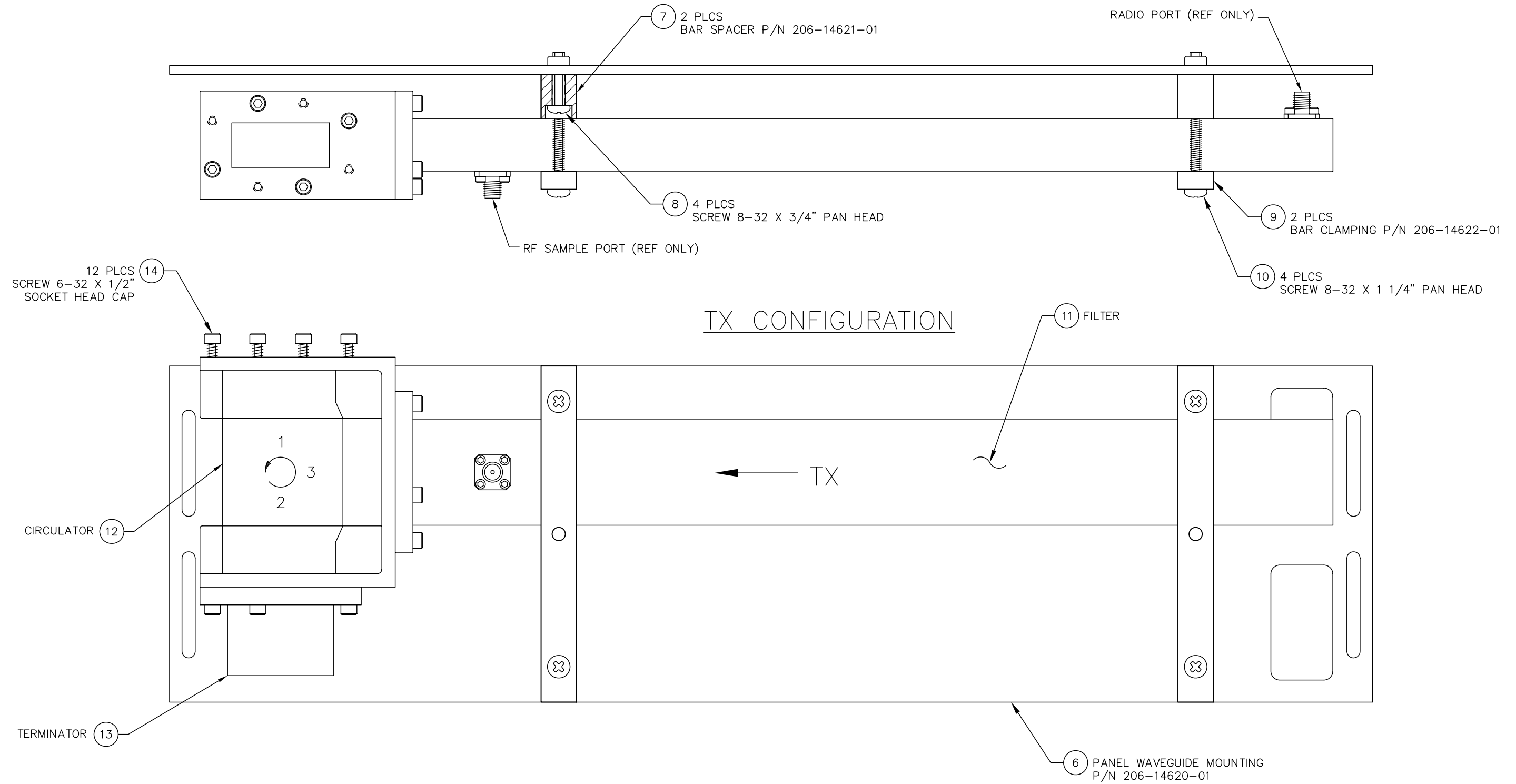
SCALE: 30%		DWG SIZE: B	<b>Moseley</b> 82 COROMAR DRIVE SANTA BARBARA, CA 93117
(DO NOT SCALE DWG)			
APPROVALS	DATE		<b>OPT KIT WVGD FLTR          7GHZ SIM DTVA</b>
DWN	RET	9-16-08	
CHK			
ENG			
TOLERANCE : <math>\pm 1/2'</math> <math>.XX \pm 0.030, .XXX \pm 0.010</math>			ITEM 910-15230-01 REV. A
SHEET 1 OF 3			



RX CONFIGURATION



SCALE: 70%		DWG SIZE <b>B</b>	<b>Moseley</b> 82 COROMAR DRIVE SANTA BARBARA, CA 93117
(DO NOT SCALE DWG)			
APPROVALS	DATE		<b>OPT KIT WVGD FLTR 7GHZ SIM DTVA</b>
DWN	RET	9-16-08	
CHK			
ENG			
TOLERANCE : <math>\pm 1/2''</math> <math>.XX \pm 0.030, .XXX \pm 0.010</math>		ITEM	<b>910-15230-01</b> REV. <b>A</b>
SHEET 2 OF 3			



SCALE: 70% DWG SIZE B		Moseley 82 COROMAR DRIVE SANTA BARBARA, CA 93117	
(DO NOT SCALE DWG)			
APPROVALS		DATE	
DWN	RET	9-16-08	
CHK			
ENG			
TOLERANCE : <math>\pm 1/2''</math> <math>.XX \pm .030, .XXX \pm .010</math>		ITEM	REV.
SHEET 3 OF 3		910-15230-01	A