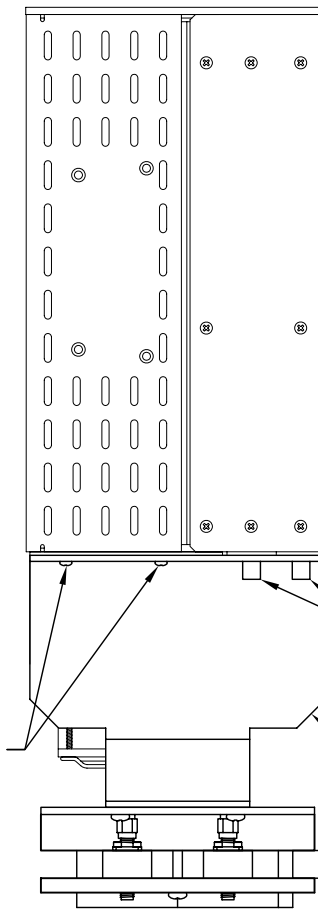
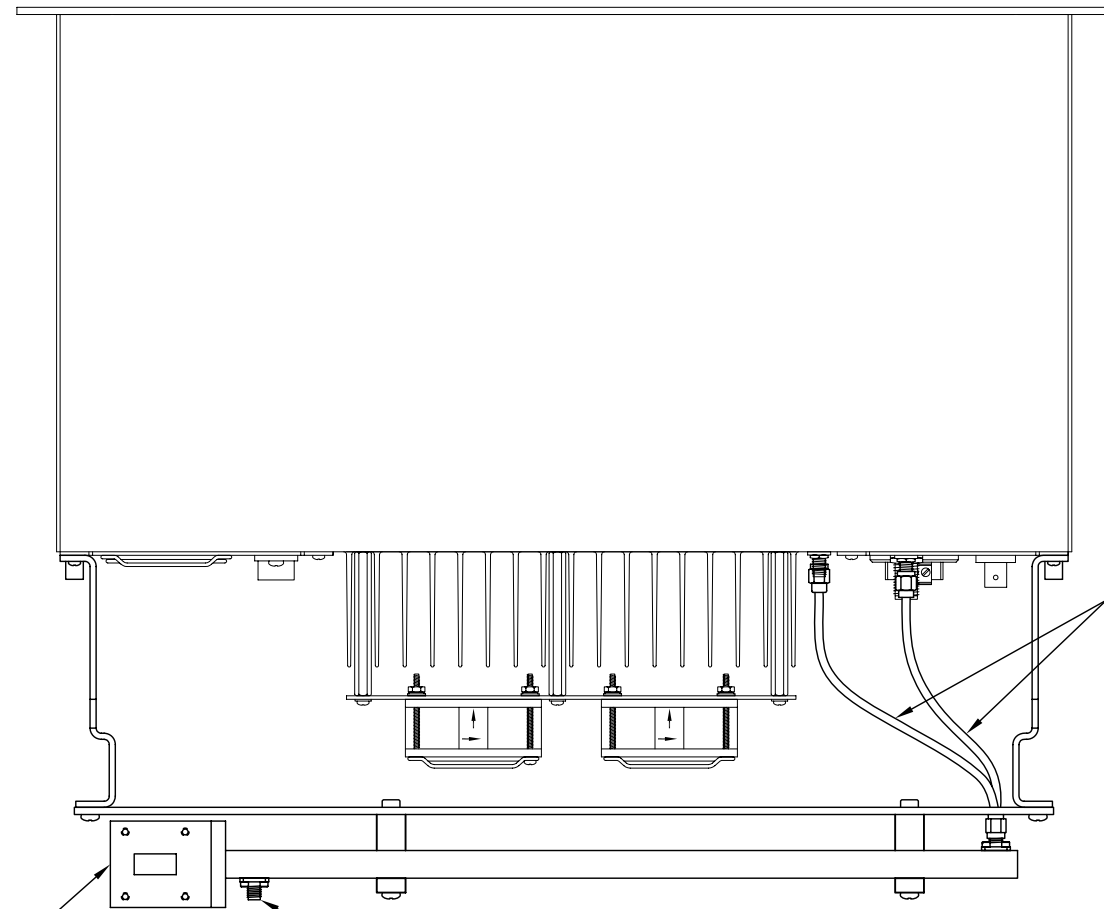
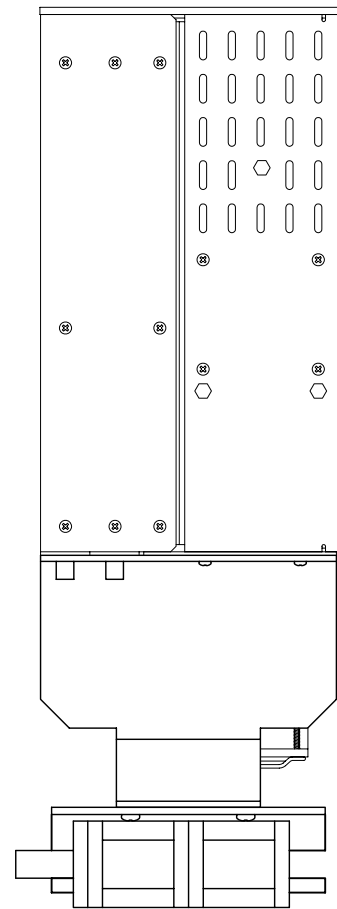


REVISIONS		
LTR	DESCRIPTION	APPROVED
A	NEW OPT KIT CREATE, ECO6965	RT



SEE SHEET 2

RF SAMPLE PORTS (REF ONLY)

5 2 PLCS  
CABLE 6" COAX  
SMA-M TO SMA-M

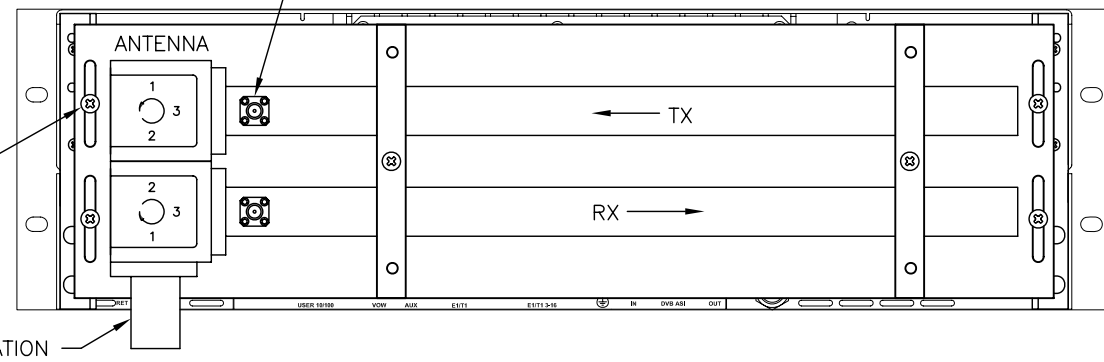
REUSE EXISTING SCREWS  
2 PLCS (EACH SIDE)

REUSE EXISTING THUMB SCREWS  
2 PLCS (EACH SIDE)

1 2 PLCS  
BRACKET P/N 206-15229-01

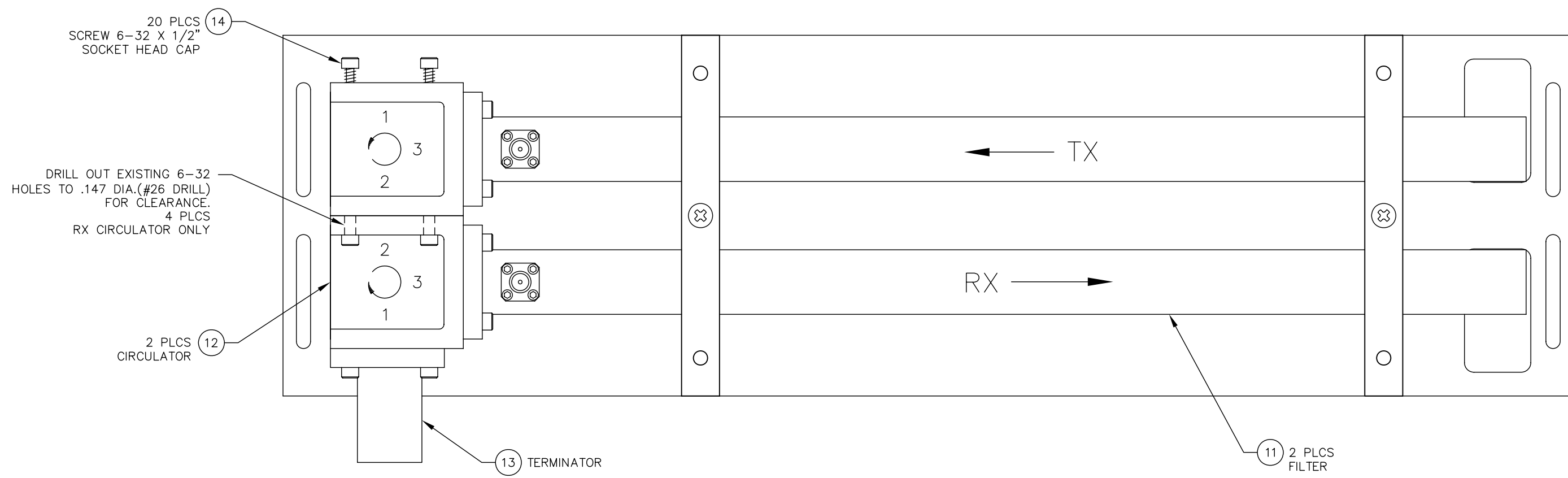
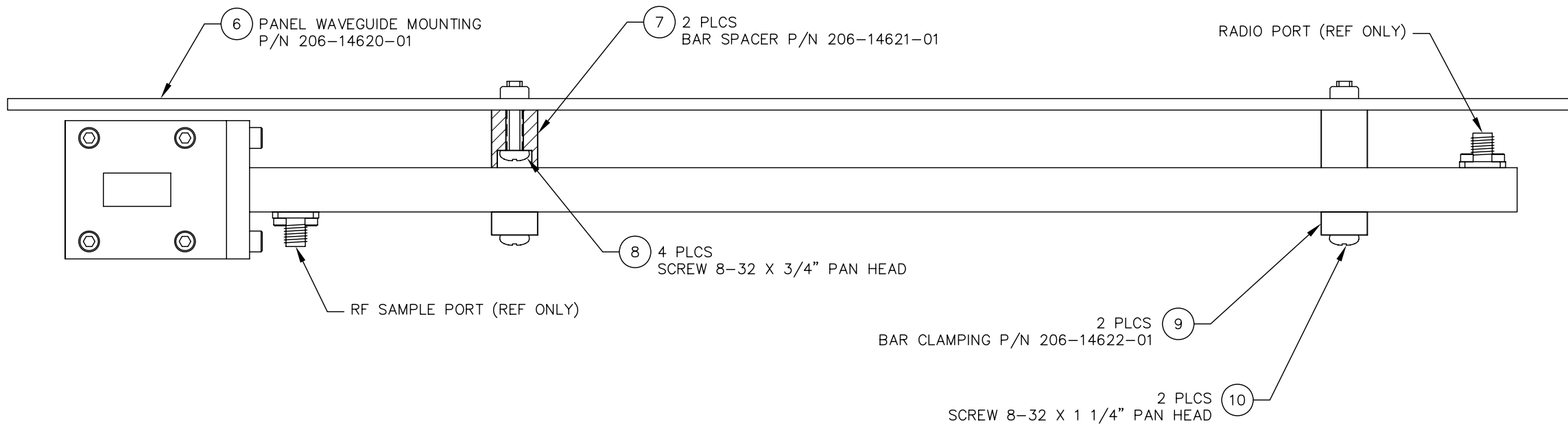
3 4 PLCS  
SCREW 8-32 X 3/8" PAN HEAD

TERMINATION



NOTES: UNLESS OTHERWISE SPECIFIED

SCALE: 30% DWG SIZE B		Moseley 82 COROMAR DRIVE SANTA BARBARA, CA 93117
(DO NOT SCALE DWG)		
APPROVALS	DATE	OPT KIT WVGD DPLXR 13GHZ DTVA
DWN	RET	
CHK		
ENG		
TOLERANCE : <math>\pm 1/2'</math> .XX $\pm 0.030$ , .XXX $\pm 0.010$		ITEM 910-15231-11 REV. A
SHEET 1 OF 2		



SCALE: 70% DWG SIZE B		Moseley 82 COROMAR DRIVE SANTA BARBARA, CA 93117	
(DO NOT SCALE DWG)			
APPROVALS	DATE	OPT KIT WGD DPLXR 13GHZ DTVA	
DWN	RET	9-17-08	
CHK			
ENG			
TOLERANCE : <math>\pm 1/2'</math> <math>.XX \pm 0.030, .XXX \pm 0.010</math>		ITEM	910-15231-11 REV. A
SHEET 2 OF 2			