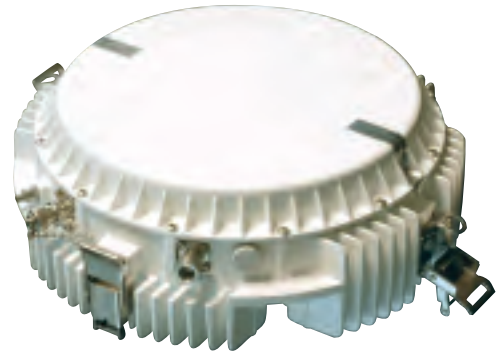


# DTV Short Haul Link



## Short Haul Digital Video/Data Link Intercity Relay

Configurable to  
310Mbps

### FEATURES

- DVB-ASI
- Full Duplex
- Standard Data Rates to 155Mbps
- Configurable to 310Mbps with additional modem card and RF head
- Multiple T1 + LAN Interfaces
- Data rate and Bandwidth Configured to Customer requirements
- Engineer's Order Wire
- Dual Error Correction System
- Built in Web Server
- SNMP-based monitoring system

### FLEXIBLE MODULARITY

The **DTV Short Haul Link's** modular design affords complete flexibility and control in any situation. It conforms to global standards, ensuring an array of possibilities now and in the future filled with innovation and enhancement.

### SPECTRUM SCALABILITY

The only digital Inter City Relay of its kind, the DTV Short Haul Link allows the user to specify its occupied spectrum according to the operational data rate. This ability offers users full network design flexibility and optimal use of the band.

### PROGRAMMABLE SPECTRAL EFFICIENCY

The DTV Short Haul Link can be configured for 4QAM, 16QAM, 32QAM, 64QAM, 128QAM. This allows users to trade spectral efficiency for system gain in this single carrier system.

### UNPARALLELED ROBUSTNESS

To overcome industrial and other man-made impulse noise as well as other burst-mode interferences, powerful Reed-Solomon and Trellis-Coded Error Correction is standard. Unfaded BER error-free performance in excess of  $10^{-12}$  is unparalleled.

An interleaver further enhances error concealment. In addition, an adaptive equalizer overcomes multipath and other channel impairments.

**Moseley**

### SYSTEM

<b>FREQUENCY RANGE</b>	6-40GHz <i>Confirm frequency band with factory.</i>
<b>CAPACITY OPTIONS</b>	
<b>DVB-AS1</b>	Up to 100Mbps full duplex
<b>ETHERNET</b>	Up to 100Mbps full duplex plus 2 E1/T1 wayside
<b>E1/T1</b>	8 or 16 E1/T1 with up to 40Mbps full duplex Ethernet wayside depending on model and E1/T1 configuration Ethernet and E1/T1 capacity also includes additional 2Mbps full duplex Ethernet capacity for NMS traffic
<b>MODULATION</b>	QPSK, 16-QAM, 32-QAM, 64-QAM, 128-QAM
<b>ENCRYPTION</b>	Encryption based upon a 128-bit key is available for select markets and is applicable for all models
<b>FEC</b>	Trellis Coded Modulation concatenated with Reed-Solomon Coding
<b>AVERAGE OUTPUT POWER</b>	QPSK: +25dBm @ 7GHz 16/32-QAM +21dBm @ 7GHz
<b>RECEIVE SENSITIVITY</b>	-84dBm to -80dBm (E1/T1) -84dBm to -70dBm (Ethernet DVB-AS1) Receiver sensitivity varies per selected frequency and modulation
<b>REGULATORY</b>	Per applicable ETSI/Fed
<b>ANTENNA CONNECTOR</b>	Coax, circular or rectangular waveguide
<b>DISTANCE</b>	1-10 miles (or greater, depending on antenna and frequency)
<b>POWER</b>	48 volts $\pm$ 10%, < 70 watts; Optional 100-240 volts AC, 47-63 Hz power supply
<b>OPTIONAL FEATURES</b>	<i>Contact factory</i>

### NETWORK MANAGEMENT

<b>SUPPORT</b>	SNMP, built-in web browser
<b>CONNECTOR</b>	RJ-45, 10/100Base TX

### CUSTOMER DATA INTERFACE

<b>PHYSICAL</b>	DVB-AS1 Ethernet N x E1/T1	100 BaseTX Full duplex E1/T1
<b>CONNECTOR</b>	DVB-AS1 Ethernet N x E1/T1	BNC RJ-45 2 x RJ-48C, HD60
<b>COMPLIANCE</b>	Ethernet SONET/OC-3 N x E1x T1	IEEE 802.3 Telcordia ITU-T

### AUXILIARY CONNECTIONS

<b>WAYSIDE</b>	Channels Interface Connector	T1/E1 DSX-1 RJ-48C
<b>ALARM Port</b>	vTwo Form C relay alarm outputs, 2TTL outputs	
<b>VOICE SERVICE CHANNEL</b>	6 wire, PTT handset	
<b>DATA SERVICE CHANNEL</b>	64kbps	

### ENVIRONMENTAL

<b>TEMPERATURE</b>	IDU	- 5° to 55°C
	ODU	- 30° to 55°C
<b>RELATIVE HUMIDITY</b>	IDU	0 to 95%, non-condensing
	ODU	Up to 100% at 45°C
<b>ALTITUDE</b>	IDU/ODU both 4500m	

### MECHANICAL

<b>SIZE</b>	IDU	IRU, ETSI compliant (44.5 x 23.8 x 4.5 cm) rack mount (19 in., 48.2cm)
	ODU	33 dia. x 13 cm (13 dia x 5 in.)
<b>WEIGHT</b>	IDU	7 lbs.
	ODU	15 lbs.

MOSELEY ASSOCIATES, INC. IS THE LEADER IN DIGITAL STL TRANSMISSION SYSTEMS FOR THE BROADCASTING INDUSTRY. FOR MORE INFORMATION VISIT US AT [www.moseleysb.com](http://www.moseleysb.com).